

# Environmental sustainability

OECD, Copenhagen 2 April 2008

Helge Ørsted Pedersen

Ea Energianalyse

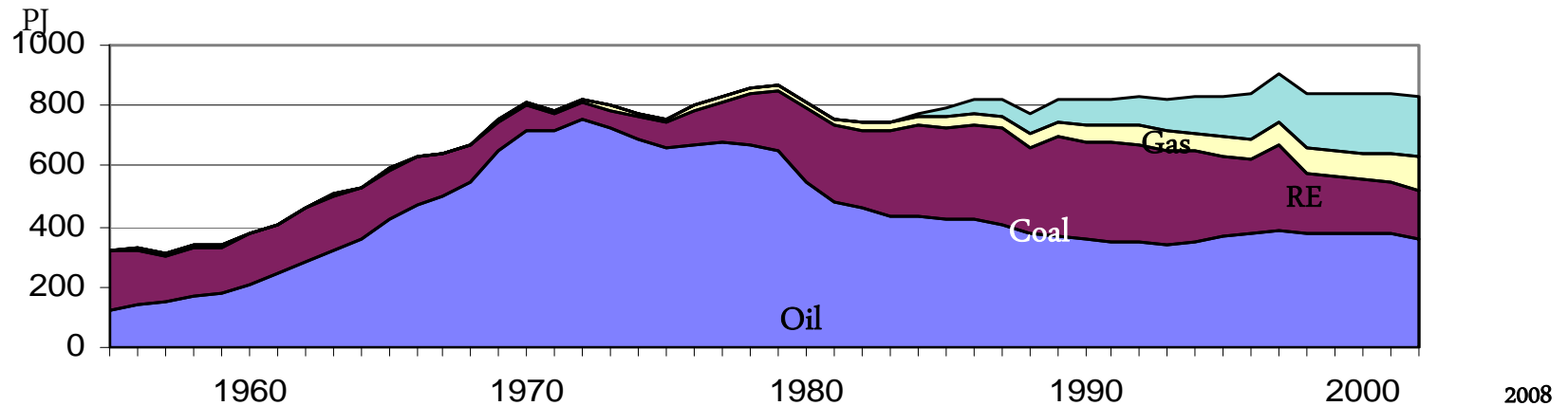
[www.eaea.dk](http://www.eaea.dk)

Frederiksholms Kanal 1, 1.

1220 Copenhagen K

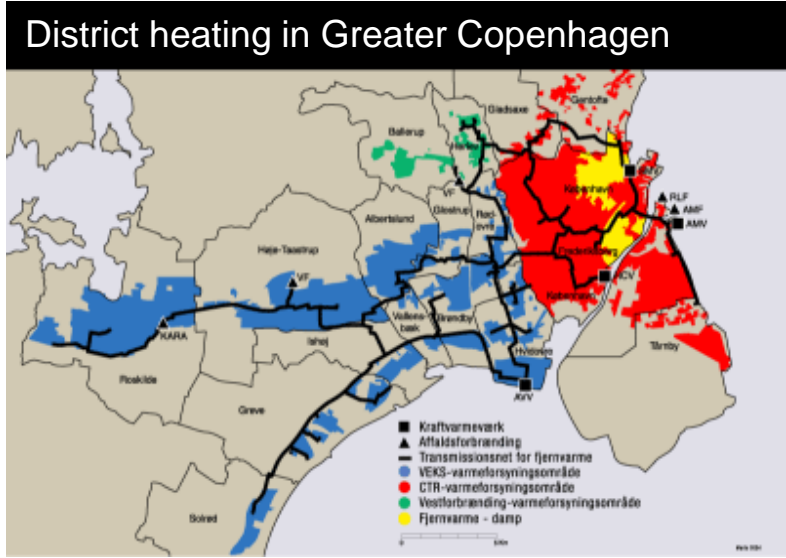
# Denmark

## Gross Energy Consumption

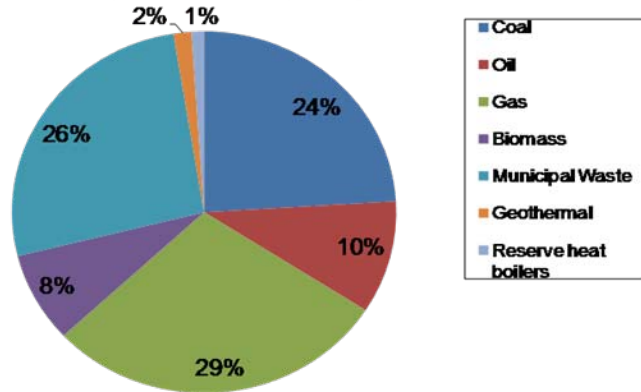


<i>Energy Policy</i>	Security of Supply + Economy + Environment + Climate + Risk Management		
	Infrastructure	Liberalisation	Organisation
Market	Energy and heating planning	Market	+ Structure
<i>Technology Export</i>		5 b. kr.	50 b. kr.
<i>Self-sufficiency</i>	0 %		145 %
<i>GDP</i>	100		150
<i>District Heating</i>	0,7 mio. households		1,5 mio. households
CHP	39 %		82 %

# District Heating in Greater Copenhagen



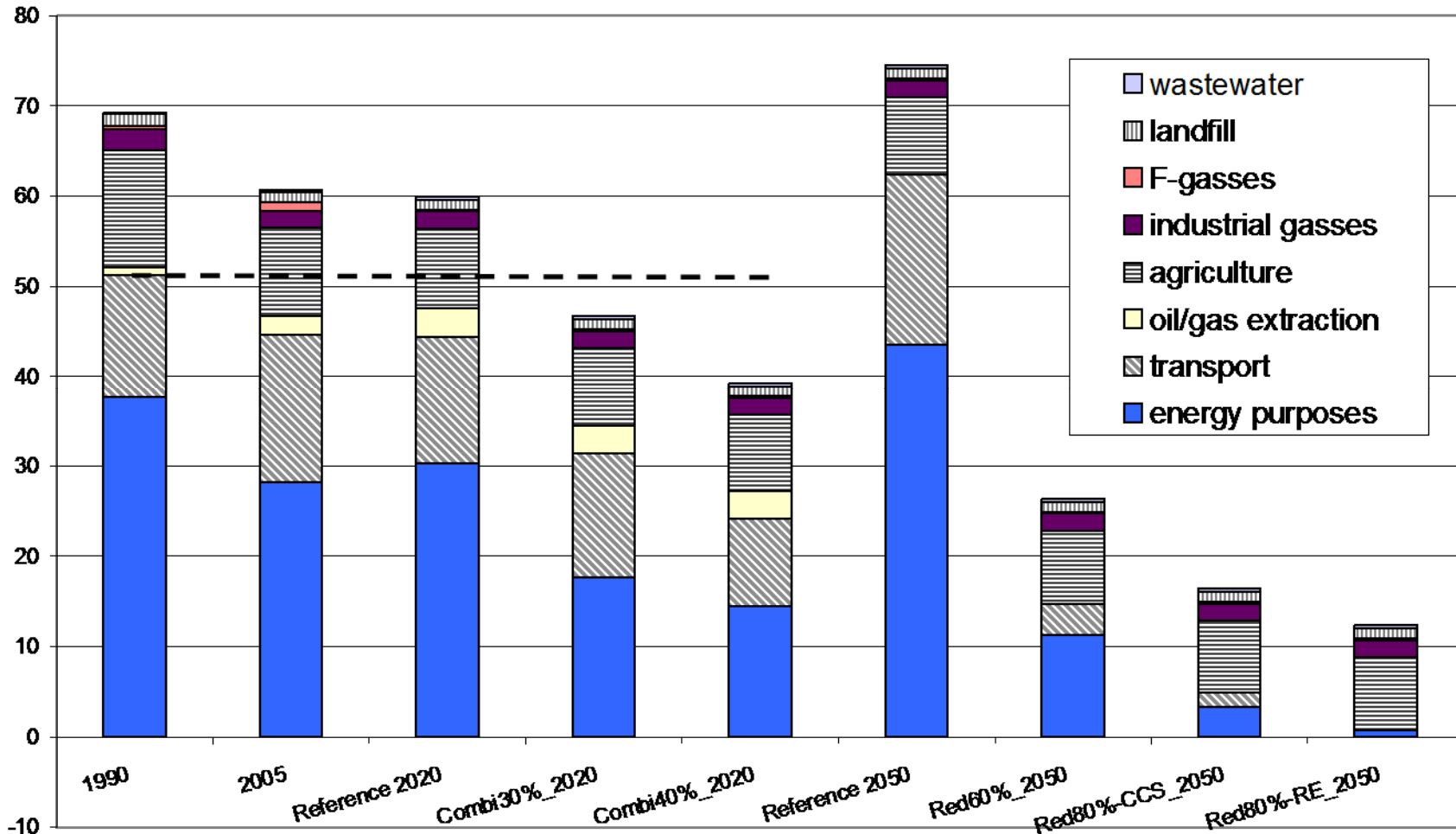
District heat production in Copenhagen 2004



# Scenarios for 2020 and 2050 Denmark

mill. tonnes CO2

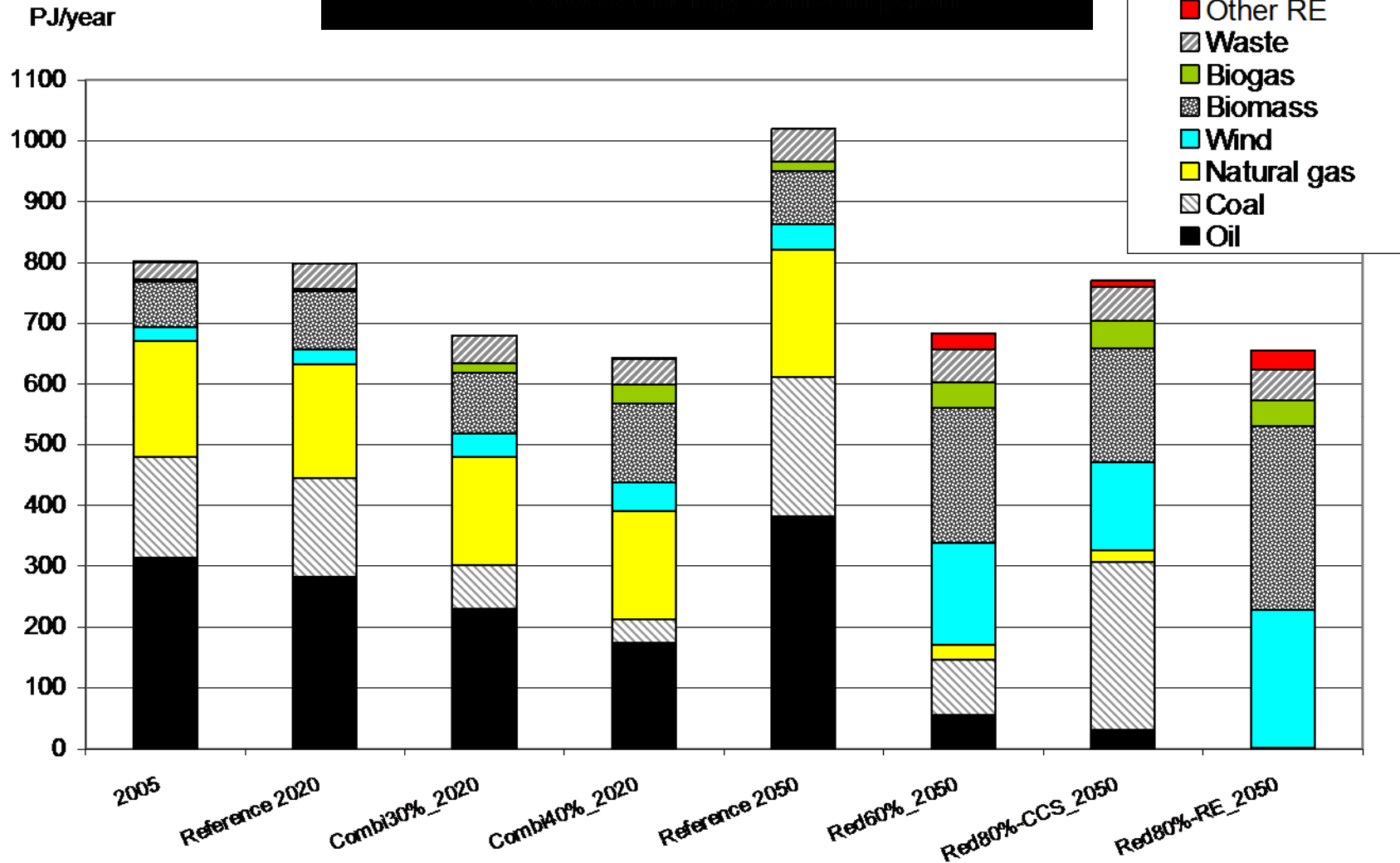
Greenhouse gas emissions (CO2-eqv.)



Greenhouse gas emissions in 1990 and 2005 (actual emissions) and in the scenarios for 2020 and 2050. The Danish Kyoto objective for the period 2008-12 is indicated by a broken line.. Source: Danish Greenhouse Gas Reduction Scenarios for 2020 and 2050, February 2008. Prepared by Ea Energy Analyses and Risø/DTU for the Danish Environmental Protection Agency.

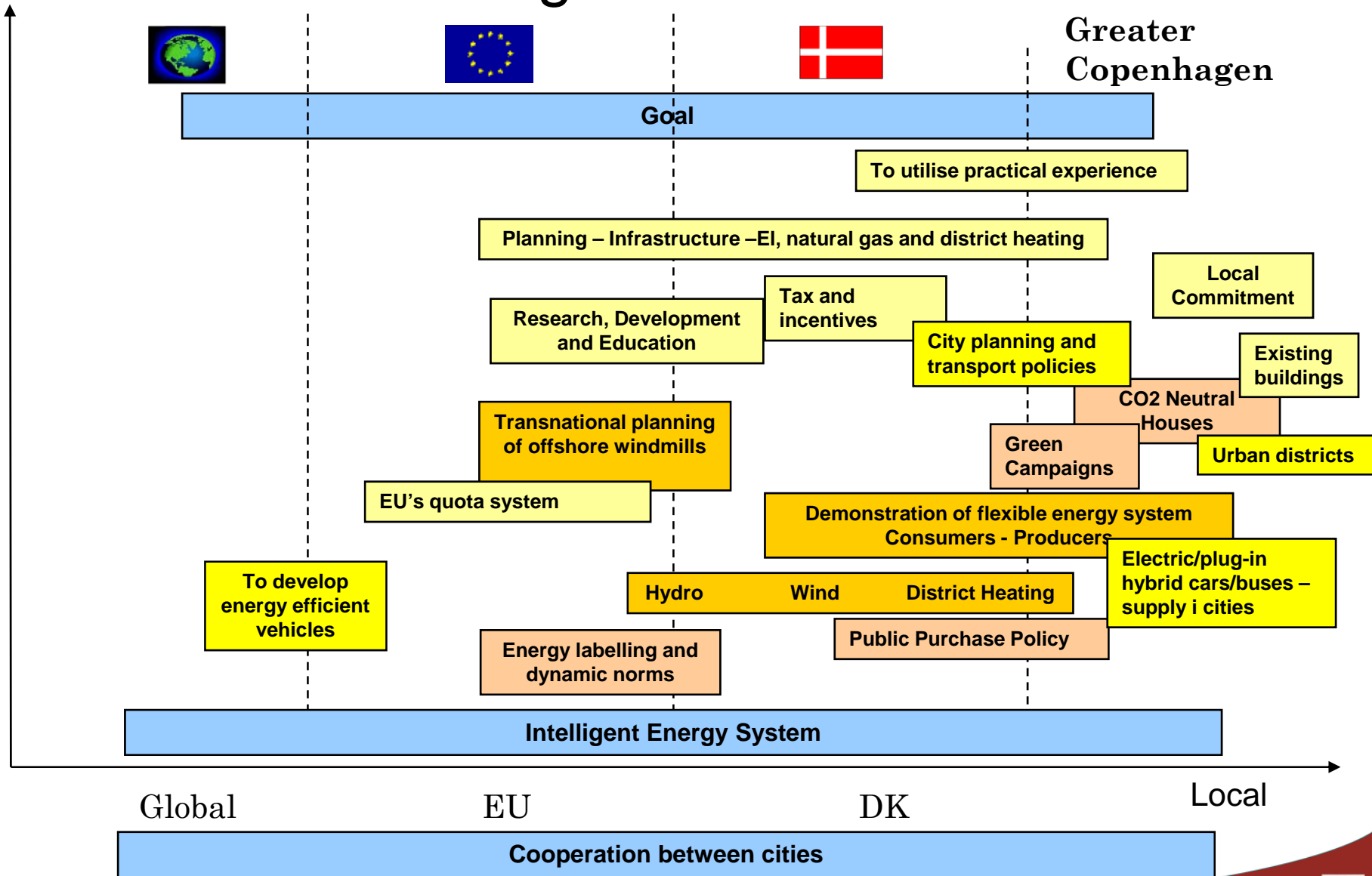
# Gross energy consumption

## Scenarios for 2020-2050 in Denmark



Gross energy consumption in 2005, and in the scenarios for 2020 and 2050. Other RE includes production based on solar energy, photovoltaics, geothermal energy and wave power. Source: Danish Greenhouse Gas Reduction Scenarios for 2020 and 2050, February 2008. Prepared by Ea Energy Analyses and Risø/DTU for the Danish Environmental Protection Agency

# From goals to action



# Local and Regional Measures

- Urban Planning
- Heat Planning
- Garbage/Waste Management
- Energy Saving
- Transport
- Research, Development, Demonstration and Education

# Local and Regional Measures

## Transport:

- Public transport (e.g. electric hybrid cars, gas buses, railways)
- Green zones (priority on low-energy vehicles)
- Traffic Planning (bus lanes, bikes tracks, etc.)
- Filling stations for electric cars and hydrogen cars

## Research, Development and Education:

- To host new energy technologies
- 'Intelligent energy systems – low-energy systems – efficient collective supply

## Energy Saving:

- Administration of rules
- Settle new areas to low-energy buildings
- Public Purchase Policies
- To reduce energy consumption in public buildings